

Buffalo Leather Repairs Restoration & Leather Repair Procedures

TO REPAIR A SCUFF OR SCRATCH ON LEATHER

HOW TO REPAIR LEATHER – SCUFFS OR SCRATCHES

Ensure the area has been cleaned thoroughly. Dirty residues on or in the leather may prevent adhesion of the leather repair colour. Over time dirty residues can also penetrate the leather repair colour which may result in the repair becoming discoloured or worn again if the area is not maintained - applying our repair protector to maintain the repaired areas will prevent the repaired areas from ageing.

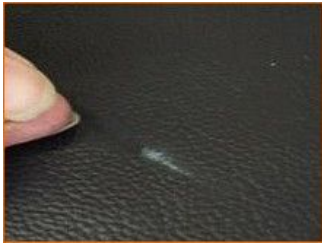
MIXING THE CORRECT COLOUR

Colours will dry differently as opposed to them being wet, so dry a small amount on the surface to test for accuracy. A good repair is dependant on the colour being as accurate as possible. You can remove the colour before it dries by using the cleaner on a power pad, sponge, or cloth.

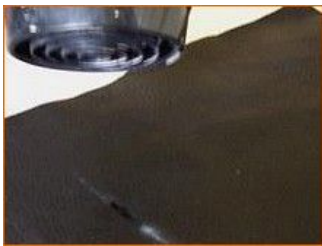
Choose a shade nearest to your leather colour, then darken, lighten, or enhance the colour using the remaining colours. The thicker you apply the colour the darker it will appear. Do not be tempted to spread your colour over a larger area, to apply a colour over a larger area a leather bonder & sealant is required for long term and cleaning durability.



1. To apply the repair colour use the wooden applicator stick by taking up a small amount on the end of the tip and applying it to the damaged area only.



2. Press down the colour with the flat side of your fingernail using reasonable pressure, this will adhere the damage back to the leather surface.



3. Use a hairdryer to dry the colour, approx 10 inches away on a medium heat for approx 30 – 60 seconds. Press down the colour again with the flat side of your fingernail using reasonable pressure.



4. Repeat steps 1-3 build the colour gradually for a more professional result until the full scuff or scratch has disappeared and been repaired.



5. If required, blend in the repair to the surrounding area by using the sponge (or airbrush - restoration kit) Once dry apply the repair protector if included in your kit. If your kit includes an aerosol sealant apply the protector after the sealant has dried.



REPAIR COMPLETED

All Rights Reserved to Buffalo as to the content of all repair procedures & information contained within this document. Copyright © 2006 by Buffalo Leather Repairs. All rights reserved.
www.buffaloleather.co.uk