

Buffalo Leather Repairs Restoration & Leather Repair Procedures

HOW TO RECREATE THE LEATHER GRAIN

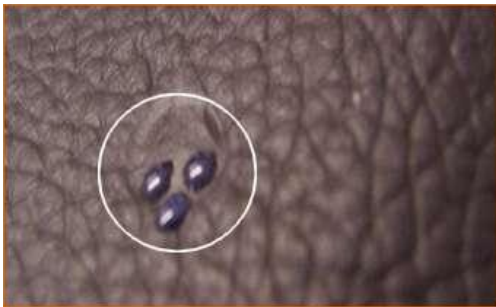
Once the repair is complete and before blending the repair, it may be required to replace the embossed skin grain that the damage has removed. This procedure can be carried out where scuffs and scratches have occurred, or if you have repaired a rip or hole using the white leather filler paste.

To re-create the leather grain you will need to purchase our [Buffalo leather filler gel](#)



1. Damage to the leather surface can often remove the skin grain leaving a smooth scarred area.

This may become obvious once the repair has been repaired and re-coloured.



2. Applying random spots of the leather filler gel by copying the surrounding skin grain re-creates the textured surface, the edges of the gel can be dragged and tapered to create a more natural shape.

Application is simple by using the pointed wooden applicator included in our leather repair kit. Simply drop the gel onto the surface. The gel retains its shape when dry.



FINISHED RESULT

The gel is quite shiny so once the gel is dry, dab on a little of your repair colour to blend it into your repaired area.

The gel retains a very natural, durable and flexible surface.

The gel is also ideal for filling out deeper damage, cracks or punctures.